

**Installation Procedure**

**Wooden Acoustic Panels**

1. Measure and mark the wall where the panels are to be installed.
2. Install the Hat sections to the wall using a Track 12 screw for every 300 mm (as shown in figure 3A).
3. Fix the Clamps to the Hat Sections (as shown in figure 3B). Enlarged view of the clip is shown in the figure 3 C.
4. Mount the panel to the clamps (as shown in figure 3d).

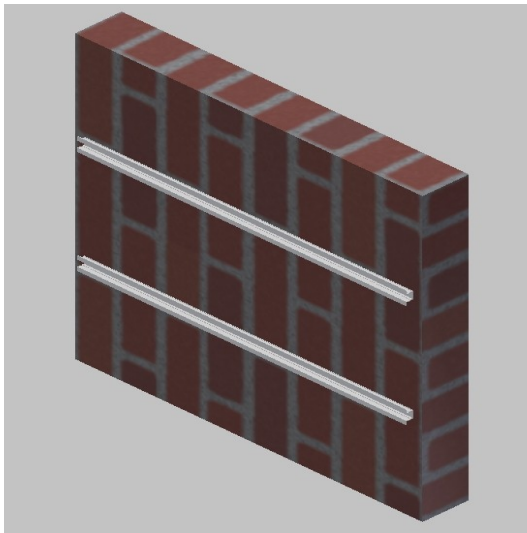


Figure 3A

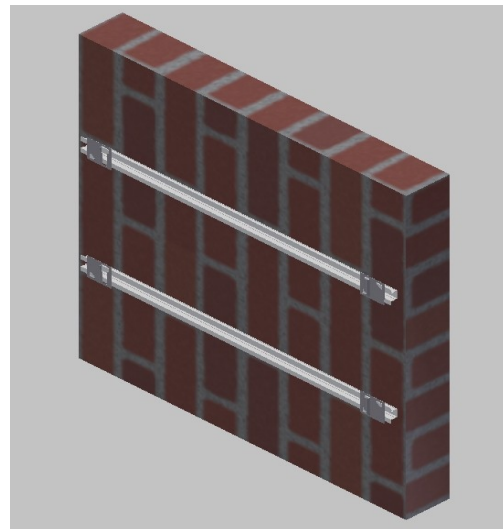


Figure 3B

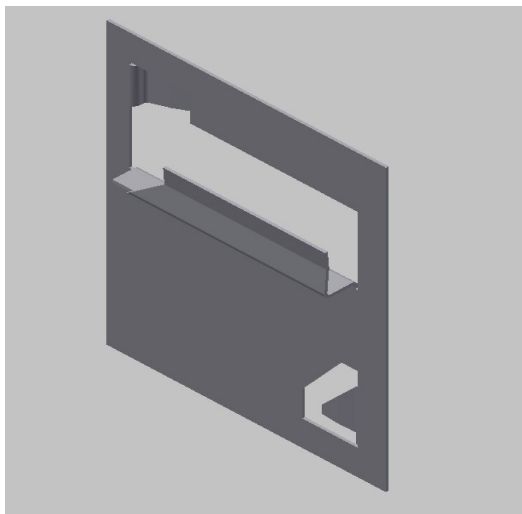


Figure 3C

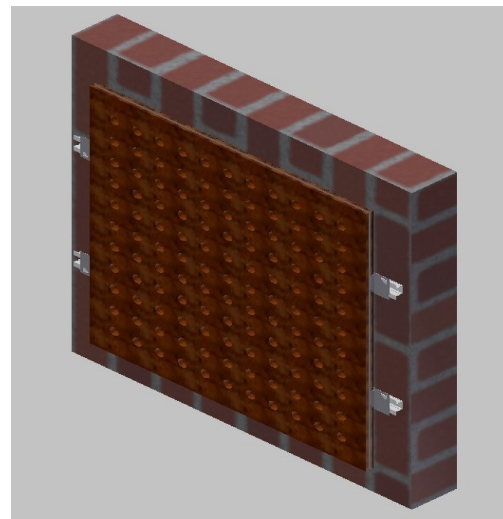


Figure 3D